

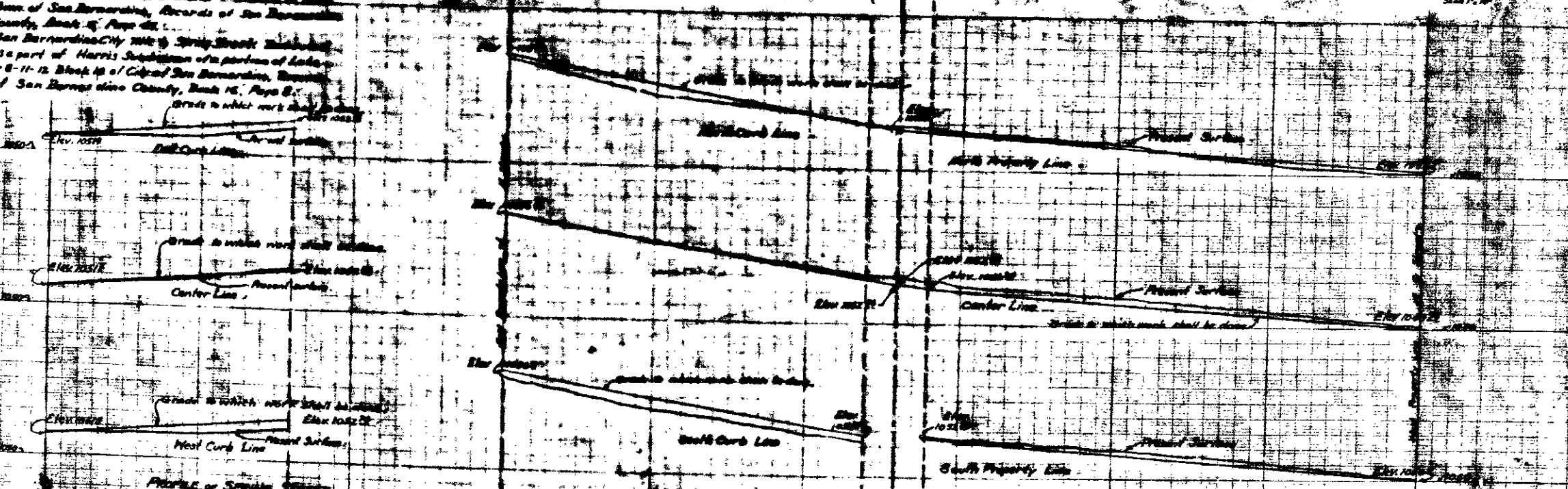
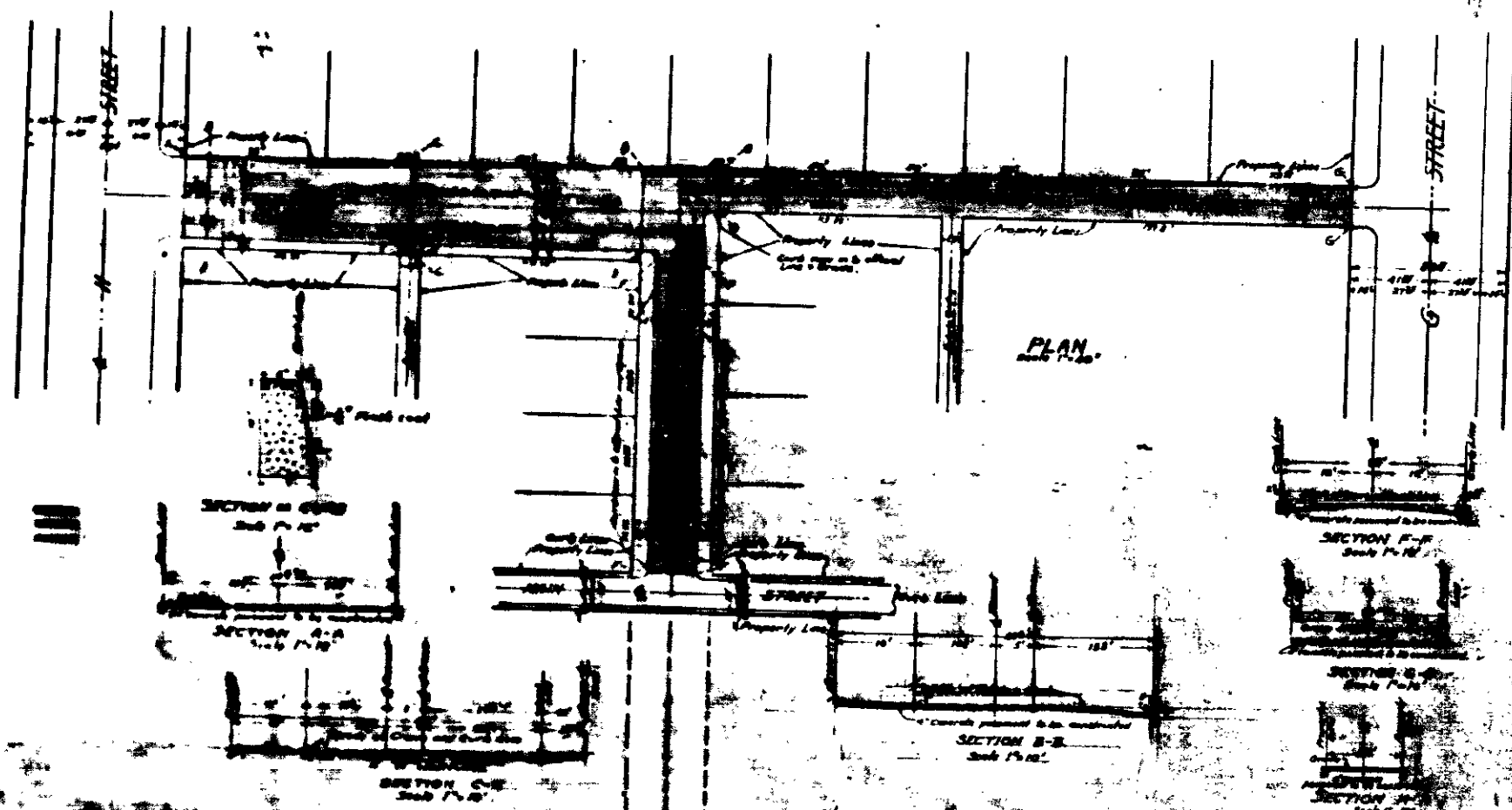
PLAN NO 106-A  
 FOR THE IMPROVEMENT OF  
**BROADWAY STREET**  
 BETWEEN  
 G STREET AND H STREET  
**AND**  
**SPRING STREET**  
 BETWEEN  
 BROADWAY STREET AND MAIN STREET  
 IN THE  
 CITY OF SAN BERNARDINO CALIFORNIA  
 SEPTEMBER 1904 C.E. JOHNSON  
 CITY ENGINEER  
 SCALE 1" = 40'

LEGEND:  
 1 means depth  
 2 means top  
 3 means diameter  
 4 means elevation  
 5 means center line  
 6 means job

Generally every 10 yards along street  
 concrete pavement to be constructed from this  
 concrete pavement in surface shown here.

NOTE:  
 All elevations in this plan are to be  
 a plane which is equal to the City level  
 mark as established by ordinance 505 of the  
 City of San Bernardino.

San Bernardino City Title to Broadway Street  
 Dedicated as a part of:  
 1. Harris Subdivision of a portion of Lot-3-1-1-1  
 Block 10 of City of San Bernardino, Records of  
 San Bernardino County, Book 14 Page 8.  
 2. Harris Subdivision of Block 2-2-1-1-1  
 Block of San Bernardino, Records of San Bernardino  
 County, Book 14 Page 41.  
 San Bernardino City Title to Spring Street  
 as a part of Harris Subdivision of a portion of Lot-3-1-1-1  
 1-8-11-12, Block 10 of City of San Bernardino, Records  
 of San Bernardino County, Book 14, Page 8.



Profile of Spring Street  
 Black lines show present surface  
 Red lines show grade to which work shall be done  
 Slope Horizontal 1" = 40'  
 Slope Vertical 1" = 2'

Profile of Broadway Street  
 Black lines show present surface  
 Red lines show grade to which work shall be done  
 Slope Horizontal 1" = 40'  
 Slope Vertical 1" = 2'

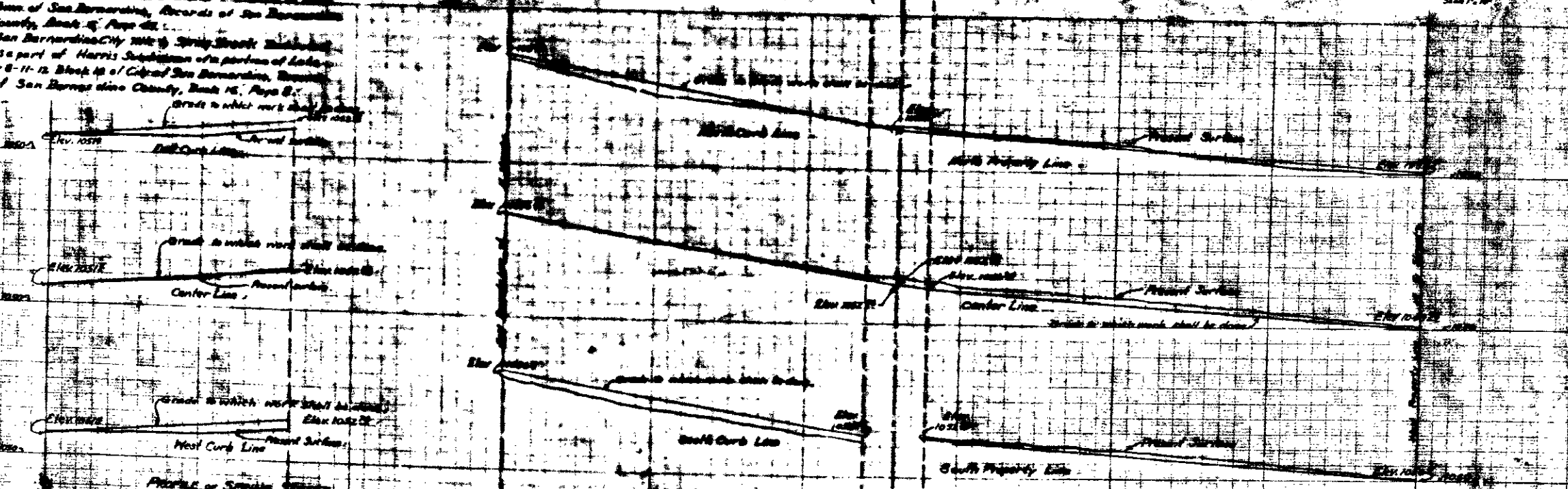
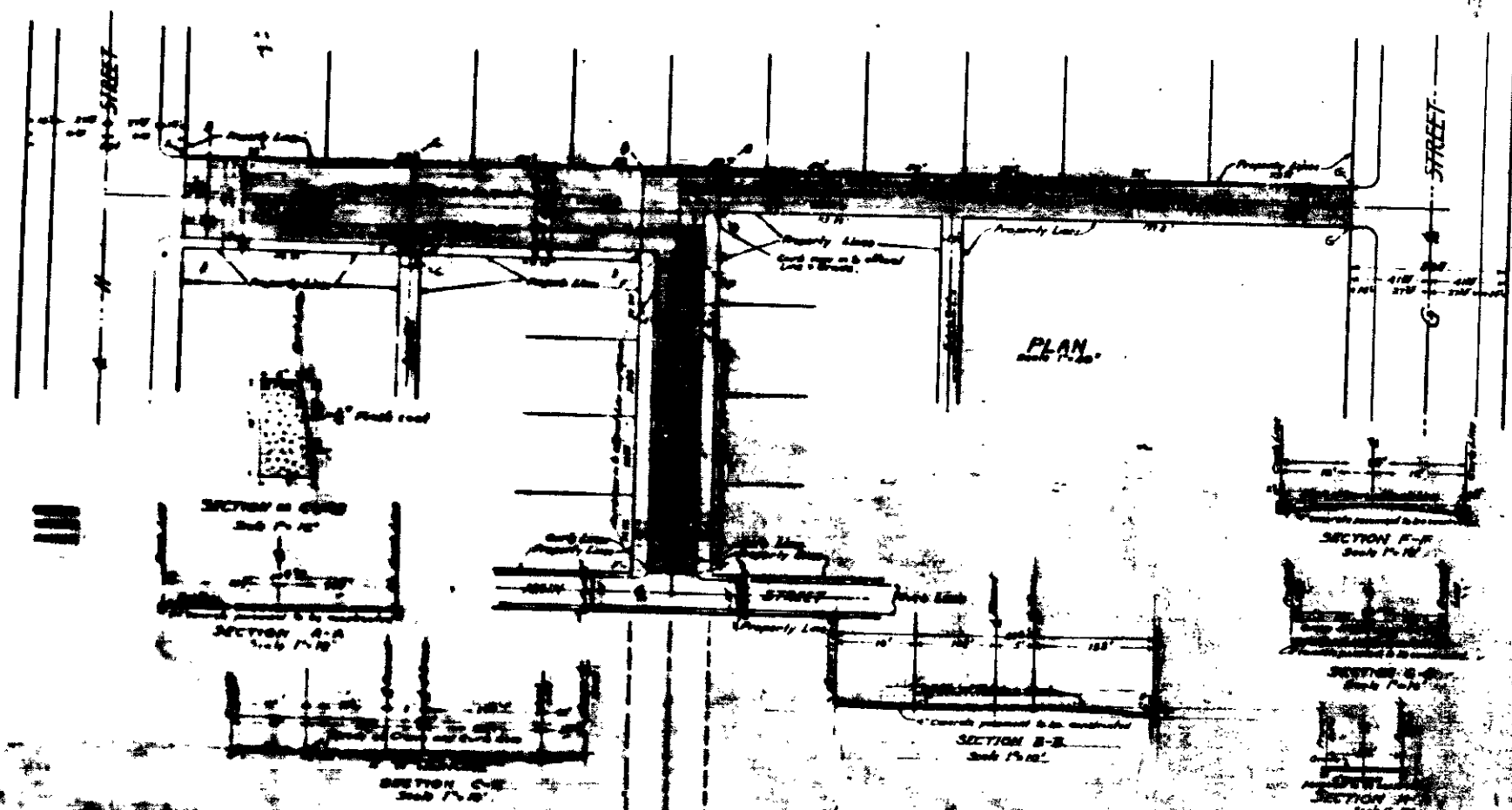
**PLAN NO 106-A**  
**FOR THE IMPROVEMENT OF**  
**BROADWAY STREET**  
 BETWEEN  
**G STREET AND H STREET**  
**AND**  
**SPRING STREET**  
 BETWEEN  
**BROADWAY STREET AND MAIN STREET**  
 IN THE  
**CITY OF SAN BERNARDINO CALIFORNIA**  
 SEPTEMBER 1934 C.E. JOHNSON  
 SCALE 1" = 40' CITY ENGINEER

**LEGEND**  
 1 means utility  
 2 means fire  
 3 means drainage  
 4 means sewer  
 5 means storm  
 6 means other

Concrete curb to be set on concrete base  
 Concrete pavement to be constructed from this  
 Concrete pavement to surface shown here.

**NOTE:**  
 All elevations in this plan are to be taken  
 from a plane which is equal to the City Bench  
 Mark or established by ordinance 505 of the  
 City of San Bernardino.

**San Bernardino City Title to Broadway Street**  
 Dedicated as a part of:  
 1. Harris Subdivision of a portion of Lot-3-10-11-12  
 Block 10 of City of San Bernardino, Records of  
 San Bernardino County, Book 16, Page 8.  
 2. Harris Subdivision of Block 2-10-11-12  
 Block 10 of San Bernardino, Records of San Bernardino  
 County, Book 16, Page 8.  
 3. Harris Subdivision of a portion of Lot-3-10-11-12  
 Block 10 of City of San Bernardino, Records of  
 San Bernardino County, Book 16, Page 8.  
 4. Harris Subdivision of Block 2-10-11-12  
 Block 10 of San Bernardino, Records of San Bernardino  
 County, Book 16, Page 8.



**PROFILES OF SPRING STREET**  
 Black lines show present surface  
 Red lines show grade to which work shall be done  
 Slope Horizontal 1" = 40'  
 Slope Vertical 1" = 2'

**PROFILES OF BROADWAY STREET**  
 Black lines show present surface  
 Red lines show grade to which work shall be done  
 Slope Horizontal 1" = 40'  
 Slope Vertical 1" = 2'